
M/V "Natalie"

M/V "Natalie"

Antigua and Barbuda Flag



Eagle Shipping Ltd

Palm Grove House

PO Box 438

Road Town, Tortola

British Virgin Island

www.eagleshippingltd.com

www.shipsforcharter.com

E-Mail 1: cskesloffice@esltd.biz

E-Mail 2: info@eagleshippingltd.com

M/V "Natalie" is a supply vessel Special Survey done 03-2017. The vessel is outfitted according to high standards, with a heavy lift crane (20/12 ton), passive heeling system and Dynamic Positioning System (DP1). New upgrade and refit 2014-2016 with a block of 10 containers, 7 living for 14 men, 1 office, 1 chilled with garbage press, 1 paint and storage), heavy frame for ROV equipment and new Sewage Plant

M/V "Natalie"

Specifications

Call sign	V2EM2
IMO Nr.	8016110
MMSI Nr.	305 473 000
Classification	DNV 1A1
Class Status	Hull: Special Survey done 03-2017 Machinery: Special Survey done 03-2017 Continuous survey all up to date
Built	1982 at Singapore Slipway & Eng. Co. Pte.
Flag	Antigua and Barbuda (A&B)
Official No. A&B	4665
Port of Registry	St. John's
Owner	Eagle Shipping Ltd
Tank capacity	Fuel 711 m³ Ballast 1.110 m³
Sewage plant	Hamann Sewage HL Continuous plus 02 Slim plant with latest IMO and SOLAS Rules 5.3 m³/day

Tonnage

Gross Tonnage	1948 ton
Net Tonnage	584 ton
Deadweight at max draft	3060 ton
Light Ship	1816.5 ton

Dimensions

Length OA	67.47 meter
Length BP	61.15 meter
Breadth, Molded	16.80 meter
Depth, Molded to upper deck	7.10 meter
Draft Max	6.09 meter

Propulsion / Positioning

Main Engines	4 x Wartsila Vasa each 1245 kW, total 4980 kW
Propulsion Generators	4 x AEG Rotaduct Type DKBH 4507/06
Propulsion	2 x Diesel Electric Azimuth's
Auxiliary Generators	1 x Emergency/Harbor set 165 kW
Forward Bow Thruster	630 kW, 1183 rpm
Aft Bow Thruster	630 kW, 1183 rpm

Cargo Capacities

Cargo Deck	380 ton (max)
Cargo Deck Max Load	5 ton/m ²
Cargo Deck Area Total	520 m ² with living containers 420 m ²
Cargo Deck Length	38.21 m
Cargo Deck Width	14 m
Fuel Oil	711 m ³
Fresh Water	505.2 m ³
Brine	111.4 m ³
Liquid Mud	212.6 m ³
Dry Bulk	198 m ³
Ballast / Drill Water	1110 m ³

Cargo Discharge Capacities

Fuel Oil	2 x	100 m ³ /hour at 6.7 bar with flow meter with print-out facility for fuel oil
Brine	1 x	140 m ³ /hour at 7.5 bar
Ballast / Drill Water	1 x	100 m ³ /hour at 7.3 bar
Fresh Water	1 x	100 m ³ /hour at 7.3 bar

Deck Equipment

Main Crane	1 x David International SWL 12 ton at 20 m, approved for man riding
Heeling System	1 x Rolling damp system
Dynamic Positioning System	DP 1 Auto heading mode and Auto positioning mode Joystick mode and Autopilot mode Green control for area keeping and Follow track mode
Mounting for ROV	on request on Deck Foundation for Schilling HD or any ROV of any size
Connection	2 x power supply 64 Amp, 400 V, 60 Hz
Windlass for Deep Sea Anchor	2 x Brattvaag with Delta Flipper Anchor 2,5 tons

Mooring Equipment

Forward Windlass	1 x Brattvaag with 2 capstan cap
Aft Windlass	2 x Brattvaag with each 1 capstan cap

Accommodations

Crew	12-19 crew in 13 single and 3 double cabins an suite'
Charter's Area	12-22 person depending of working area in double cabins an suite'
Laundry	1
Hospital	1
Satellite TV	1 Mini-V-Sat
Intercom	1 Phonetech
Cafeteria/mess room	1
Recreation	2

Navigation Equipment

Radar	2 x Furuno MU 201 CR
Radar	1 x Furuno RCU-015
Doppler Speed Log	1 x Furuno DS-800
GPS	1 x Furuno GP-150
GPS	1 x Furuno GPR-020
Electronic chart System	1 x Chart pilot with aft and forward display
Gyro compass repeater	1 x AMI-GFV Marine KW950
Satellite compass	1 x Furuno SC502
Turne indicator	1 x Marine Data MD-745.115
Navtex	1 x Furuno NX-500
Echo sounder	1 x Simrad ED161
Autopilot	1 x Pilot Star D
AIS	1 x JRC JHS-180
Watch keeper	3 x Anssen
DP System	1 x Marine technologies DP1 Unit and Cyscan Unit
Joystick System	1 x Kongsberg Simrad OT SDP/SJS OT W/box
CT-System	1 x VIKING, Working Station Forward and Aft

Communication Equipment

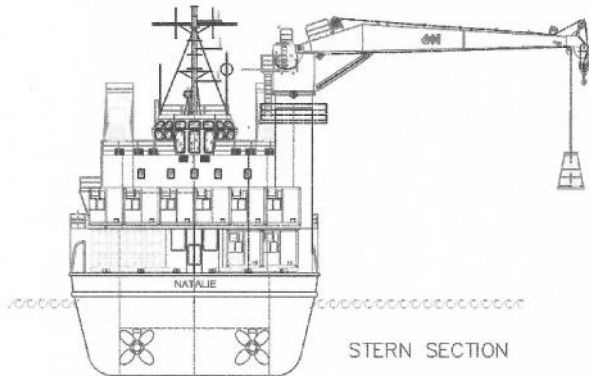
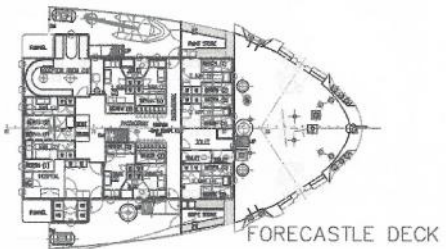
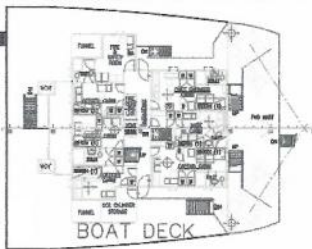
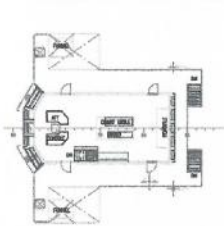
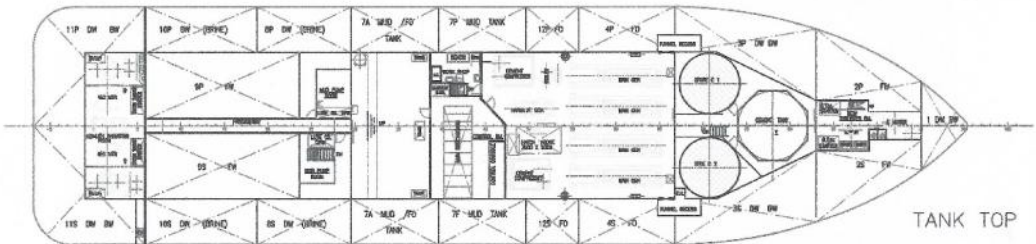
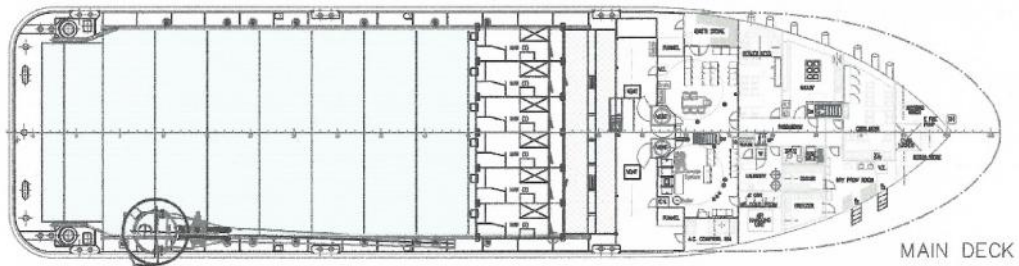
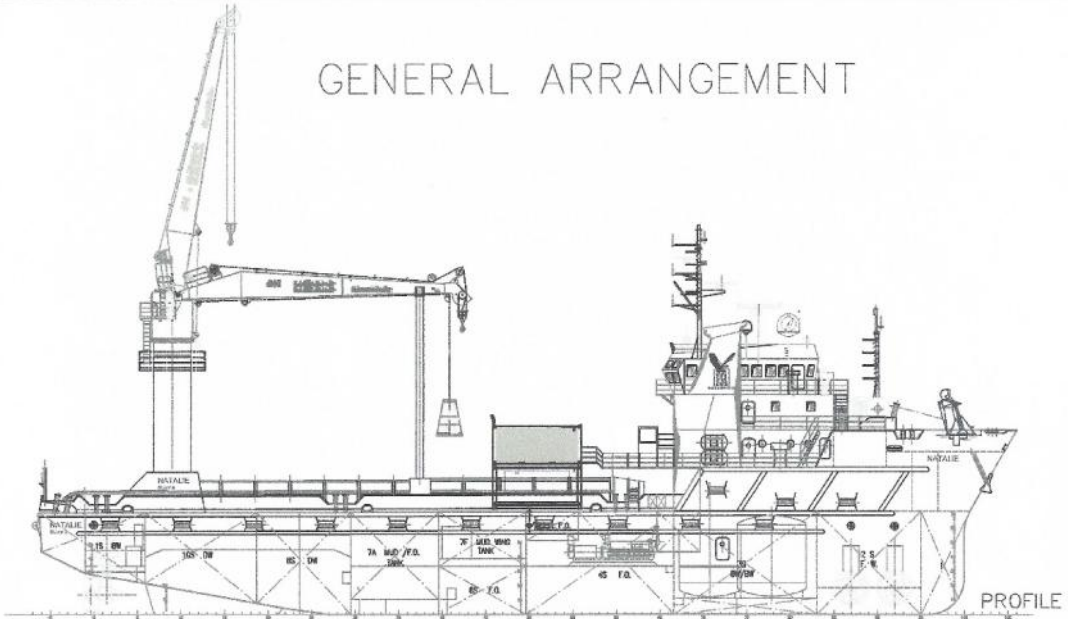
GMDSS	3 x Marconi Marine Salvitag
MF/HF control unit	1 x Sailor CU5100
Inmarsat C	2 x Furuno Felsom 15
Printer for Inmarsat	2 x Furuno & OKI
VHF	2 x Sailor RT2048
DSC transceiver	1 x ICS DSC2
Radar transponder	1 x Mc Murdo RT9Mc Murdo S4
S.P Radio	1 x R109
UHF	4 x Motorola
Satellite phone	1 x Iridium Pilot
V-Sat	1 x SeaTel Inmarsat

Rescue Equipment

MOB boat	1 x fully classed according to SOLAS
Life rafts	4 x according to Rules
Immersion Suits	46 x according to Rules
Life wests	50 x according to Rules

M/V "Natalie"

GENERAL ARRANGEMENT



PRINCIPAL PARTICULARS

LENGTH OVERALL	47.5m
LENGTH BETWEEN PERP	40.0m
BREADTH MOULDED	15.5m
DEPTH MOULDED	7.1m
MAX. DRAUGHT	6.07m
DECK HEIGHT (Foreboard)	5.50m
DECKWEIGHT AT MAX. DRAUGHT	3,300 Tons
DECKWEIGHT AT 5.50 DRAUGHT	2,480 Tons
PRINCIPAL PARTICULARS (with centre of gravity 1m above main deck)	1,600 Tons
SPRINGS REGISTER TONS Below	1,820 Tons
SPEED PARTICULARS	14.0 Knots

- Technische Änderungen vorbehalten

0011 23.07.1910	Wagalla, Instandt. Raum			
0010 17.04.1910	Kraus, Reparaturkabinen			
0009 16.04.1910	Booth, Mastbau			
Diese Zeichnung und Planung ist Eigentum der F.O. RWTH Aachen und wird ausschließlich genehmigte Benutzung (Verpflichtung, Deckung) an Dritte und Betriebsrat ist unzulässig und macht Schadensersatzpflichtig.		Merkmal:	Projektnummer:	Umschlag:
	1200	2014 Instandt. Raum	16.04.1910	General Arrangement
		Umschlag:	Projekt Nr.:	Umschlag Nr.:
		noch 010 34	GA 20150103	001
				1

DER M/V NATALIE.DWG

M/V "Natalie"



Top view



Aft deck with Main Crane



Deck house from aft



Aft bridge



Aft deck with crane

To contact Eagle Shipping Ltd regarding charter

www.shipsforcharter.com

Please E-mail or call

Consultant

Volker Müller +49 173 6074821

E-mail volker@esltd.biz

Or

Technical Manager

Helmut Utikal +49 4721 201 988

Mobile +49 173 6011790

E-mail helmut@esltd.biz

Or

Office

Monika Kieferle +49 4721 201 988

Fax +49 4721 201 965

E-mail office cskesloffice@esltd.biz

Or

Offshore Operations Manager and DPA

Nica Buruiana +49 4721 201 988

Mobile 1 +40 766 532458

Mobile 2 +49 171 8353716

E-mail nica@esltd.biz

To contact Eagle Shipping Ltd regarding sales

www.eagleshippingltd.com

Please E-mail or call

Owner's representative

Per Erik Eriksson +1 954 960 5835

Mobile +1 954 376 2878

E-mail info@eagleshippingltd.com

E-mail info@esltd.biz